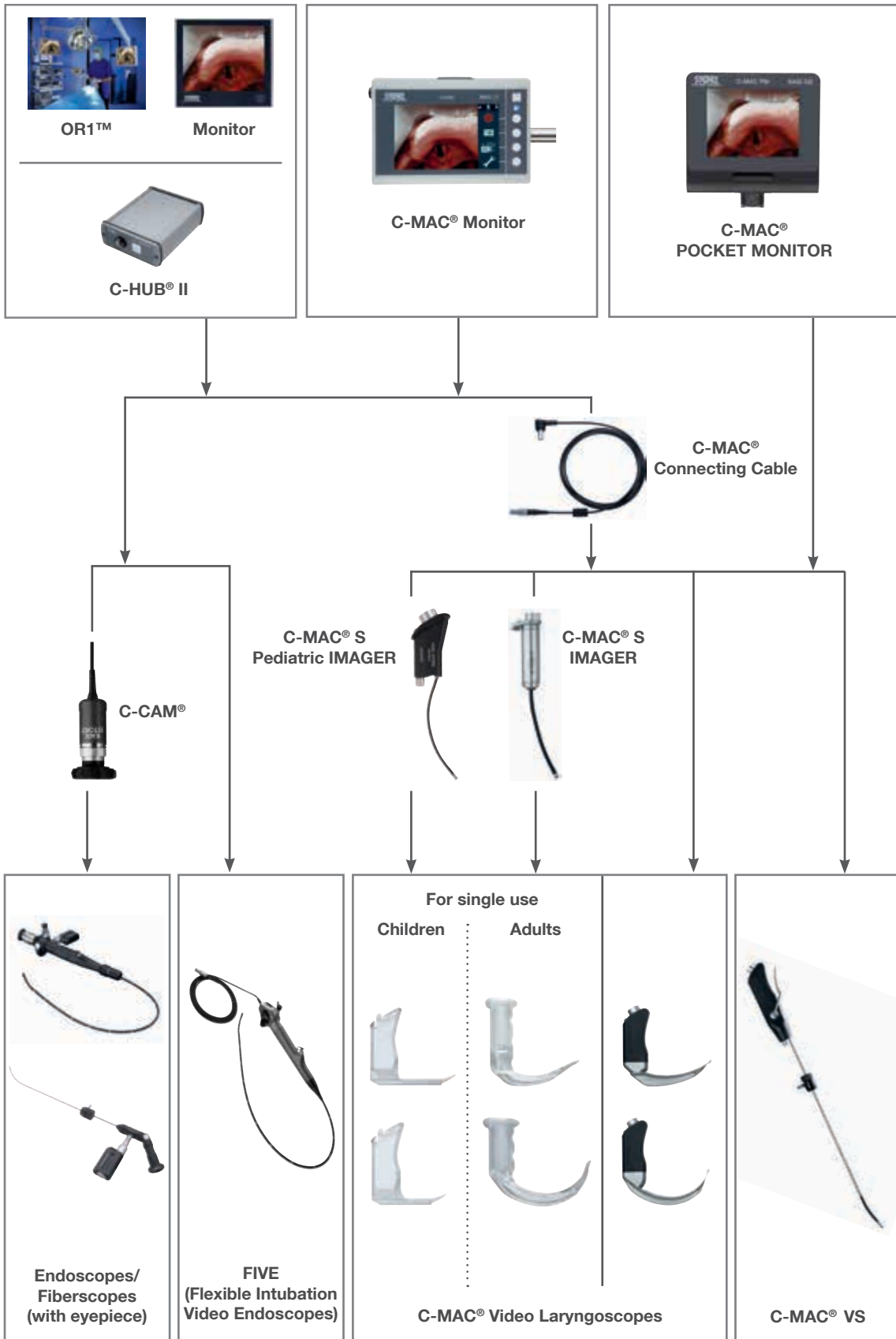


What do you need for intubation?

We offer the solution: The C-MAC® system



# The C-MAC® System – We understand airway management!





KARL STORZ launched the first commercially available video laryngoscope and also offers the C-MAC®, the only airway management system allowing multiple endoscopes to be connected to a single monitor. In the year 2016, we defined the premium class with the introduction of the new C-MAC® system interface. It is probable that your clinical algorithm contains multiple alternatives. With the C-MAC® system, we take the same approach.

Airways vary as much as patients themselves, and your instruments for intubation should be just as diverse. Regardless of whether you are performing a routine, anticipated difficult, or unanticipated difficult intubation, the intubation instruments from KARL STORZ offer you the right answer to the daily challenges encountered in airway management. The ergonomic design and excellent image display make them excellent instruments for the initial training of young doctors and the continued education of experienced colleagues.

Whether you prefer video laryngoscopes, flexible intubation endoscopes, or the new C-MAC® video stylet, you can always simultaneously connect two endoscopes to a single C-MAC® monitor. Your "plan B" will be ready to go, and you won't lose any valuable time during intubation.

Through the systematic improvement of an idea and an open ear for the needs of the market, KARL STORZ has succeeded in creating the unique C-MAC® system in order to better cater for your needs.

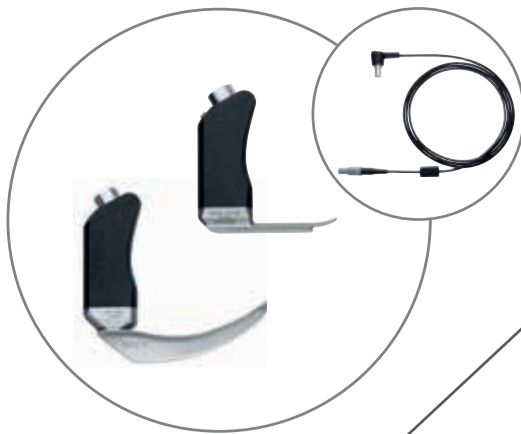


# The C-MAC<sup>®</sup> Monitor: The

- System open to all C-MAC<sup>®</sup> components (forward and backward compatibility)
- 7" TFT wide viewing angle (160°) with enhanced image quality
- Rapid toggling between video sources possible – "plan B" is already connected!
- HDMI output for connecting an external monitor
- Documentation and display of images and videos in real time
- Easy data backup to USB flash drive for quality assurance
- System can be used while charging



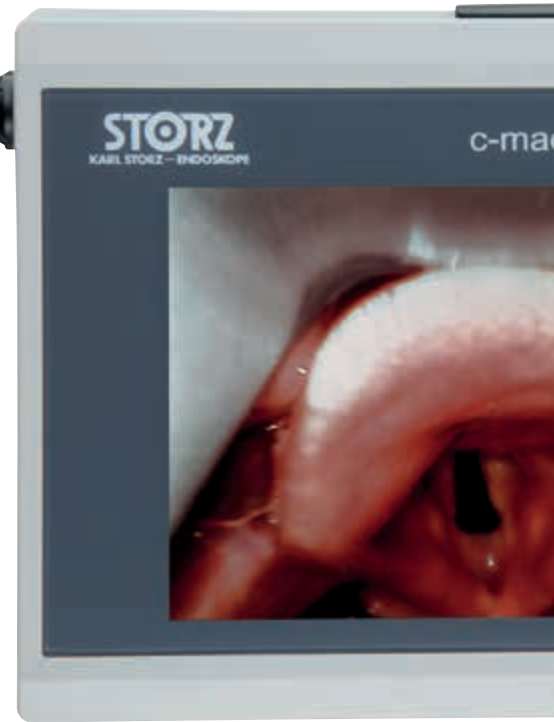
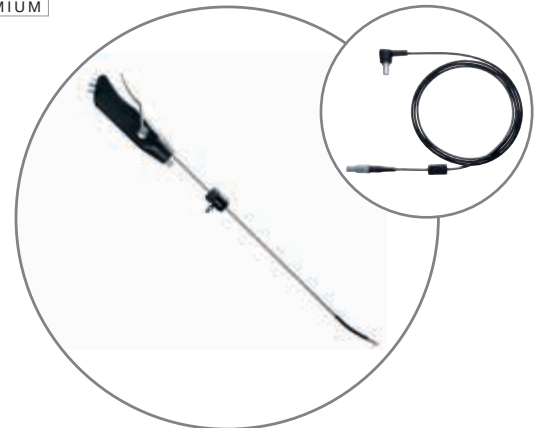
**C-MAC<sup>®</sup> Video Laryngoscopes**



**C-MAC<sup>®</sup> S Video Laryngoscopes**



**C-MAC<sup>®</sup> Video Stylet**



# Heart of the C-MAC® System



**Flexible Intubation  
Video Endoscopes**



**Intubation Fiberscopes**



**Retromolar  
Intubation Endoscopes**



# The C-MAC<sup>®</sup> Pocket Monitor: The Emerge

- 3.5" OTI<sup>®</sup> (Open To Intubate) display with wide view angle (160°)
- High-contrast image even in bright daylight
- Universal C-MAC<sup>®</sup> system interface, tailored to your airway management
- Real-time documentation for quality assurance
- Exchangeable, rechargeable battery – always ready for use
- Completely watertight (IPX8)
- C-MAC<sup>®</sup> PM connecting cable allows optimal visualization coupled with a well-balanced C-MAC<sup>®</sup> video laryngoscope



## C-MAC<sup>®</sup> Video Laryngoscopes

- Standard MACINTOSH and MILLER video laryngoscopes for safe intubation
- D-BLADE Ped. with strong curvature for the particularly difficult airway



## C-MAC<sup>®</sup> S Video Laryngoscopes

- Single-use video laryngoscopes for optimal protection against cross-contamination



## C-MAC<sup>®</sup> Video Stylet

- Deflectable distal tip combines the advantages of both rigid and flexible intubation endoscopes



# Emergency Tool for Time-critical Situations



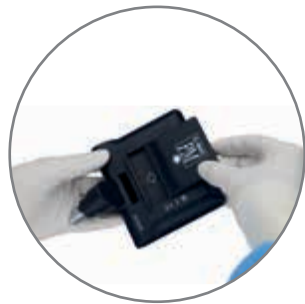
## OTI® (Open To Intubate) Display

- The video laryngoscopes are ready for immediate use after starting the monitor



## Real-time Documentation for Quality Assurance

- BlueButton enables images and videos to be recorded to internal memory and retrieved via the USB data cable



## Intelligent Battery Management

- Uninterrupted readiness at no extra cost thanks to exchangeable and rechargeable battery



## C-MAC® PM Connecting Cable

- The C-MAC® PM connecting cable enables flexible positioning of the monitor for difficult-to-access patients

## The C-MAC® Video Laryngoscope

The ideal instrument for training

- Robust and light: High stability and shock resistance; light alloy design
- Particularly flat model
- Straightforward plug & play thanks to universal C-MAC® system interface
- BlueButton: Documentation via innovative multifunctional button
- Reprocessing up to 93 °C
- Meets the highest ergonomic standards – specially shaped and shortened handle
- For routine clinical use and training



### C-MAC® MACINTOSH #4, #3, #2, #0



### C-MAC® MILLER #1 and #0



### C-MAC® D-BLADE and D-BLADE Ped.





**NEW**

## The C-MAC® S IMAGER

The ideal solution with single-use video laryngoscope blades



The single-use video laryngoscope blades form a perfect symbiosis with the C-MAC® S IMAGER or C-MAC® S Pediatric IMAGER while meeting the highest hygiene standards.

- Blade and handle form one continuous piece: Risk of cross-contamination is drastically reduced
- Exchange of C-MAC® S video laryngoscopes within seconds
- BlueButton: Documentation via innovative multifunctional button
- Straightforward Plug & Play thanks to universal C-MAC® system interface
- Extremely safe and break-resistant C-MAC® S video laryngoscopes

### C-MAC® S IMAGER



**MACINTOSH #4**



**MACINTOSH #3**



**D-BLADE**

### C-MAC® S Pediatric IMAGER



**MILLER #1**



**MILLER #0**

## The New Gold Standard: FIVE for the Expected Difficult Airway

### Fine, fast, focused – the new visualization in flexible intubation

With the new Flexible Intubation Video Endoscopes (FIVE) 5.5 x 65, 4.0 x 65 and 3.0 x 51.5, KARL STORZ once again sets a new direction in airway management. Similar to the C-MAC® video laryngoscopes, the FIVEs deliver clear, pixel-free images without a Moiré effect. The flexible intubation video endoscopes are directly connected to the C-MAC® monitor. This allows you to switch to the video laryngoscope very rapidly whenever necessary.

- Compatible with the C-MAC® monitor and the C-HUB® camera control unit
- Compact design and ergonomic handle shape
- Checks positioning of double lumen tubes (DLT)
- For inspection of the airways
- Practical tube fixation with special adaptor
- High image resolution and video imaging in 4:3 format
- Integrated LED light source



**NEW**

## The C-MAC® VS (Video Stylet)

**Redefine your limits!**



The C-MAC® VS can be considered a successor to the familiar retromolar intubation endoscope. Thanks to its sheath and deflectable tip, the C-MAC® VS combines the advantages of both rigid and flexible intubation endoscopes and is therefore of particular benefit in bariatric surgery or for patients with a restricted mouth opening or cervical spine problems. Thanks to a lever with passive return, the distal bend can easily be adapted to specific anatomic conditions. The high-resolution CMOS chip ensures clear, pixel-free images in a 4:3 format without a Moiré effect.

- Straightforward Plug & Play thanks to universal C-MAC® system interface
- BlueButton: Documentation via innovative multifunctional button
- Reprocessing up to 65° possible
- Completely watertight (IPX8)
- Angulation up to 60° with attached ETT
- Continuous O<sub>2</sub> flow available via the tube adaptor extends the time window for intubation



## The Retromolar Intubation Endoscope

### The visualization solution for the unexpected difficult airway

Retromolar intubation endoscopes feature a distally angled, rigid telescope that serves as a guide rod for endotracheal intubation and can easily displace soft tissue. Combined with the C-CAM® camera head, these instruments are further components within the C-MAC® system.

- Outer diameters of 2 mm, 3.5 mm and 5 mm
- Continuous O<sub>2</sub> flow available via the tube adaptor extends the time window for intubation
- Intubation possible within seconds using retromolar or medial intubation techniques
- Connecting and intubation is independent of stationary light sources thanks to the portable LED “Power of Light” light source
- Suitable for clinical emergency situations and for patients with a limited mouth opening (> 1 cm)
- Suitable and validated for standard low-temperature reprocessing methods



## Accessories: little things that make work easier

We do not stop working when our products are finished – because we want to make life easier for you...

How are flexible fiberscopes and rigid eyepiece endoscopes connected to the monitor?

**With C-CAM®.**



What facilitates the introduction of the endotracheal tube?

**The C-MAC® GUIDE.**

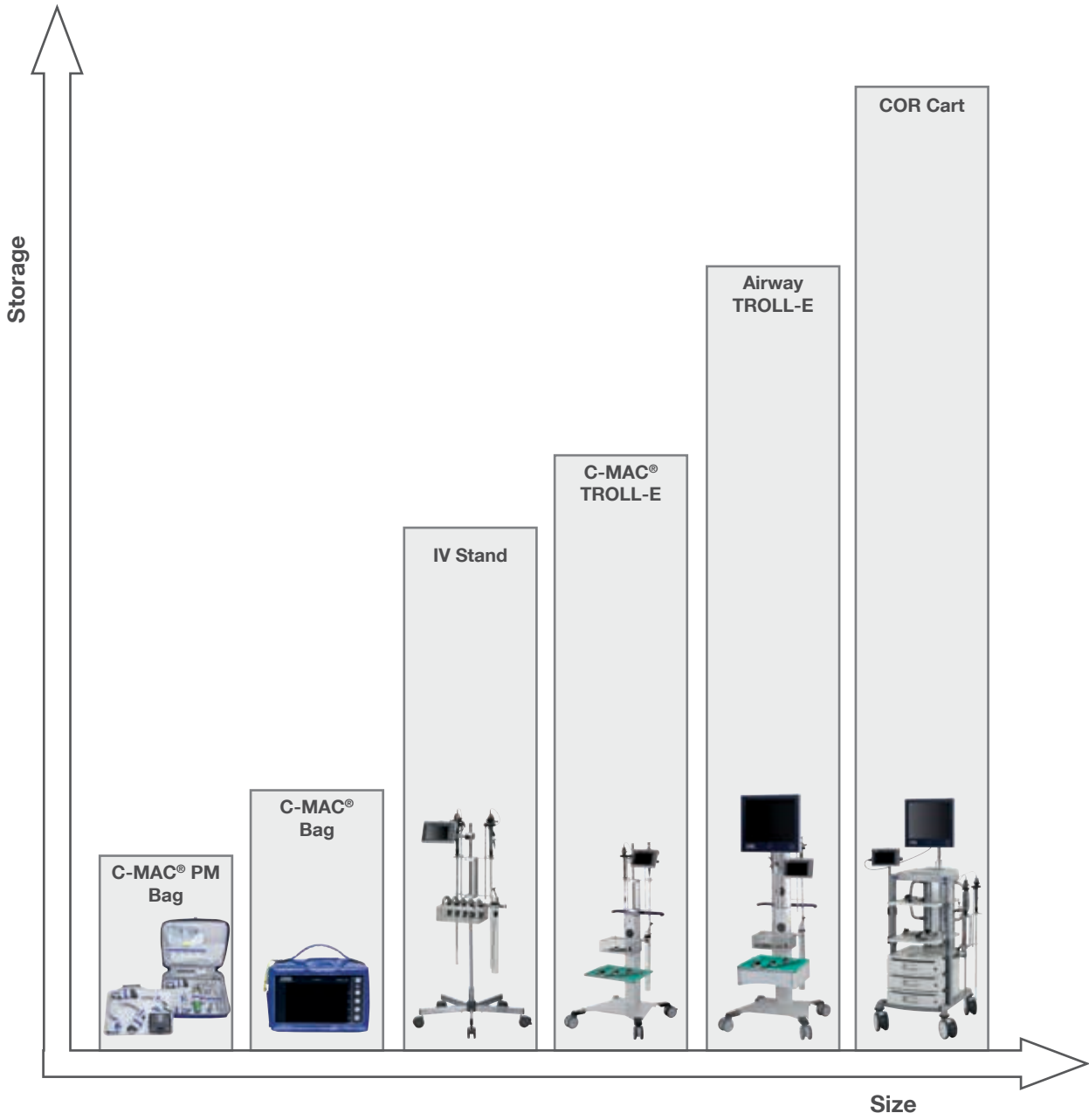


How can you remove foreign bodies from the oropharynx quickly and easily?

**With the MAGILL forceps.**



In addition to the C-MAC® protective cover and the well-organized C-MAC® PM bag, we can also offer mobile airway management solutions.



# What are the applications of the C-MAC® system?

Bedside medicine

Emergency care



General anesthesia

ICU

Emergency room

Prehospital use



## Instruments



- 8403 ZXX **C-MAC® Monitor for CMOS Endoscopes**, screen size 7" with 1280 x 800 pixel resolution, two camera inputs, a USB and a HDMI port, optimized user interface, video and image capture in real time on SD card, playback of recorded video clips and still images, data transfer from SD card to USB flash drive possible, splash-proof according to IP54, suitable for wipe disinfection, shock-resistant ABS plastic housing, intelligent power management with rechargeable Li-Ion batteries, VESA 75 mounting option, power adaptor for EU, UK, USA and Australia, power supply 110-240 VAC, 50/60 Hz, for use with CMOS video endoscopes including:  
**Protection Cap**  
**VESA 75 Quick Clip**  
**Mains Adaptor Set**



- 8403 X **C-MAC® Connecting Cable**, with C-MAC® system interface, for C-MAC® Monitor 8403 ZXX or C-HUB® II 20290301, length 200 cm, for use with C-MAC® Video Laryngoscopes 8403 xxx



- 8403 XDK **C-MAC® POCKET MONITOR Set**, unit with LCD monitor and power supply for all C-MAC® video laryngoscopes, with C-MAC® system interface, screen size 3.5", documentation of images and video sequences saved on internal memory, monitor movable via two rotation axes, rechargeable Li-Ion battery, 1 h operation time, exchangeable battery pack, 2 h charging time, power management with capacity indicator, protection class IPX8, for use with C-MAC® Video Laryngoscopes 8403 xxx including:  
**Battery**, rechargeable  
**USB Data Cable**



- 8403 XDP **C-MAC® PM Connecting Cable**, for the transmission of digital signals from C-MAC® PM 8403 XD to C-MAC® Video Laryngoscopes 8403 xxx (C-MAC® system interface), length 50 cm





8403 XDL **Charging Unit**, for one rechargeable battery 8403 XDA for C-MAC® POCKET MONITOR 8403 XD, with power supply and mains adaptor for EU, UK, USA and AUS, power supply 100-240 VAC, 50/60 Hz, suitable for wipe disinfection, for use with battery for C-MAC® PM



8403 XDA **Battery**, rechargeable Li-Ion battery for power supply of C-MAC® PM 8403 XD, charging via Charging Unit 8403 XDL, optimal operation time of 60 min, suitable for wipe disinfection



8403 XDD **USB Data Cable**, USB 2.0 port, for data transfer from C-MAC® PM 8403 XD to a computer, length 200 cm



20290132 **C-CAM® Camera Head**, 8-pin, one-chip CMOS camera head, resolution 640 x 480, focal length  $f = 20$  mm, for use with C-HUB® 20290101 and C-HUB® II 20290301 as well as C-MAC® Monitors 8402 ZX/8403 ZX



809120 **MAGILL Forceps**, for children, modified, length 20 cm, suitable for endoscopic foreign body removal, for use with video laryngoscopes sizes 1 and 2



809125 **MAGILL Forceps**, modified, length 25 cm, suitable for endoscopic foreign body removal, for use with video laryngoscopes sizes 2-4



**8403 BX/BXC C-MAC® Video Laryngoscope MAC #4,**

CMOS technology, with MACINTOSH laryngoscope blade, size 4, with C-MAC® system interface, documentation of images and video sequences via BlueButton, with catheter introduction sizes 16-18 Fr. (8403 BX only), for use with C-MAC® Connecting Cable 8403 X for C-MAC® Monitor 8403 ZX or C-HUB® II 20290301 as well as C-MAC® PM 8403 XD



**8403 AX/AXC C-MAC® Video Laryngoscope MAC #3,**

CMOS technology, with MACINTOSH laryngoscope blade, size 3, with C-MAC® system interface, documentation of images and video sequences via BlueButton, with catheter introduction sizes 14-16 Fr. (8403 AX only), for use with C-MAC® Connecting Cable 8403 X for C-MAC® Monitor 8403 ZX or C-HUB® II 20290301 as well as C-MAC® PM 8403 XD



**8403 KXC C-MAC® Video Laryngoscope MAC #2,**

CMOS technology, with MACINTOSH laryngoscope blade, size 2, with C-MAC® system interface, documentation of images and video sequences via BlueButton, for use with C-MAC® Connecting Cable 8403 X for C-MAC® Monitor 8403 ZX or C-HUB® II 20290301 as well as C-MAC® PM 8403 XD



**8403 EXC C-MAC® Video Laryngoscope MAC #0,**

CMOS technology, with MACINTOSH laryngoscope blade, size 0, with C-MAC® system interface, documentation of images and video sequences via BlueButton, for use with C-MAC® Connecting Cable 8403 X for C-MAC® Monitor 8403 ZX or C-HUB® II 20290301 as well as C-MAC® PM 8403 XD



**8403 GXC C-MAC® Video Laryngoscope MIL #1,**

CMOS technology, with MILLER laryngoscope blade, size 1, with C-MAC® system interface, documentation of images and video sequences via BlueButton, for use with C-MAC® Connecting Cable 8403 X for C-MAC® Monitor 8403 ZX or C-HUB® II 20290301 as well as C-MAC® PM 8403 XD



**8403 DXC C-MAC® Video Laryngoscope MIL #0,**

CMOS technology, with MILLER laryngoscope blade, size 0, with C-MAC® system interface, documentation of images and video sequences via BlueButton, for use with C-MAC® Connecting Cable 8403 X for C-MAC® Monitor 8403 ZX or C-HUB® II 20290301 as well as C-MAC® PM 8403 XD



8401 HX **C-MAC® Video Laryngoscope D-BLADE**, for adults, CMOS technology, for difficult intubation, with C-MAC® system interface, documentation of images and video sequences via BlueButton, with catheter introduction sizes 16-18 Fr., for use with C-MAC® Connecting Cable 8403 X for C-MAC® Monitor 8403 Z XK or C-HUB® II 20290301 as well as C-MAC® PM 8403 XD



8403 HXP **C-MAC® Pediatric Video Laryngoscope D-BLADE**, CMOS technology, for difficult intubation in children, with C-MAC® system interface, documentation of images and video sequences via the BlueButton, for use with C-MAC® Connecting Cable 8403 X for C-MAC® Monitor 8403 Z XK or C-HUB® II 20290301 as well as C-MAC® PM 8403 XD



8403 XSI **C-MAC® S IMAGER**, with C-MAC® system interface, for manual and machine disinfection up to 65 °C and High Level Disinfection (HLD) acc. to US standards, for use with C-MAC® Connecting Cable 8403 X, C-MAC® Monitor 8403 ZX, C-MAC® POCKET MONITOR 8403 XD or C-HUB® II 20290301 as well as C-MAC® S Video Laryngoscopes 051113-10, 051114-10 and 051116-10 for single use



051114-10 **C-MAC® S Video Laryngoscope MAC #4**, with MACINTOSH laryngoscope blade, size 4, for single use, package of 10, for use with KARL STORZ C-MAC® S IMAGER 8402 XS, 8403 XS or 8403 XSI



051113-10 **C-MAC® S Video Laryngoscope MAC #3**, with MACINTOSH laryngoscope blade, size 3, for single use, package of 10, for use with KARL STORZ C-MAC® S IMAGER 8402 XS, 8403 XS or 8403 XSI



051116-10 **C-MAC® S Video Laryngoscope D-BLADE**, laryngoscope blade for difficult intubation, for single use, package of 10, for use with KARL STORZ C-MAC® S IMAGER 8402 XS, 8403 XS or 8403 XSI




8401 DS **C-MAC® S GUIDE**, guide rod made of stainless steel with atraumatic tip, distal region is adapted to the blade shape of the C-MAC® video laryngoscope D-BLADE, fixation of endotracheal tube with the integrated tube holder possible, package of 10, for use with C-MAC® video laryngoscopes




8403 XSPK **C-MAC® S Pediatric IMAGER, Set**, with C-MAC® system interface, for manual and mechanical disinfection up to 65 °C and High Level Disinfection (HLD) acc. to US standards, including Pressure Compensation Cap 11025 E and Leakage Tester 13242 XL, for use with C-MAC® Connecting Cable 8403 X, C-MAC® Monitor 8403 ZX, C-MAC® POCKET MONITOR 8403 XD or C-HUB® II 20290301 and single-use C-MAC® S Video Laryngoscopes 051110-10, 051111-10



051111-10\* **C-MAC® S Video Laryngoscope MIL #1**,  for single use, package of 10, for use with KARL STORZ C-MAC® S Pediatric IMAGER 8403 XSP



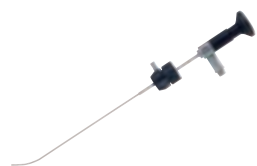
051110-10\* **C-MAC® S Video Laryngoscope MIL #0**,  for single use, package of 10, for use with KARL STORZ C-MAC® S Pediatric IMAGER 8403 XSP



10331 B2K **Retromolar Intubation Endoscope, Set**, with movable eyepiece, **autoclavable**, outer diameter 5 mm, for ETT > 5.5 mm, usable sheath length 40 cm, distal bending 40°, including:  
**Retromolar Intubation Endoscope Tube Holder**



10332 BK1 **Retromolar Intubation Endoscope**, with movable eyepiece, outer diameter 3.5 mm, for ETT 4.0-5.5 mm, usable sheath length 35 cm, distal bending 40°, including tube holder, for tube fixation and O<sub>2</sub> application



11605 CK **Intubation Endoscope**, with eyepiece, outer diameter 2 mm, for ETT 2.5-3.5 mm, usable sheath length 22 cm, distal bending 40°, angle of view 80°, including case and tube fixation, for use with LED Battery Light Sources (11301 D1, D3, D4, DE, DF), 20290132 C-CAM® Camera Head, 8-pin





10331 BXK **C-MAC® VS**, rigid intubation video endoscope set, with deflectable tip, CMOS technology, for use with C-MAC® Connecting Cable 8403 X for C-MAC® Monitor 8403 ZXK or C-HUB® II 20290301 as well as C-MAC® PM 8403 XD

Deflection up/down:	60°/0°
Direction of view:	0°
Angle of view:	100°
Working length:	41 cm
Total length:	60 cm
Distal tip outer diameter:	5.5 mm



11301 BNXX **Flexible Intubation Video Endoscope Set 5.5 x 65**, CMOS technology, with suction valve, for use with C-MAC® Monitors 8402 ZX/8403 ZX and C-HUB® 20 2901 01 and C-HUB® II 20290301

Deflection up/down:	140°/140°
Direction of view:	0°
Angle of view:	100°
Working length:	65 cm
Total length:	94 cm
Working channel inner diameter:	2.1 mm
Distal tip outer diameter:	5.5 mm



11302 BDXX **Flexible Intubation Video Endoscope Set 4.0 x 65**, CMOS technology, with suction valve, for use with C-MAC® Monitor 8403 ZX and C-HUB® II 20 2903 01

Deflection up/down:	140°/140°
Direction of view:	0°
Angle of view:	100°
Working length:	65 cm
Total length:	93 cm
Working channel inner diameter:	1.5 mm
Distal tip outer diameter:	4.0 mm



11301 ABXX **Flexible Intubation Video Endoscope Set 3.0 x 51.5**, CMOS technology, for use with C-MAC® Monitor 8403 ZX and C-HUB® II 20 2903 01

Deflection up/down:	140°/140°
Direction of view:	0°
Angle of view:	100°
Working length:	51.5 cm
Total length:	72 cm
Distal tip outer diameter:	2.85 mm



11301 BNK1 **Intubation Fiberscope 5.2 x 65**, eyepiece version, with suction valve, for use with LED Battery Light Sources  
 11301 D1/D3/DE/DF, C-CAM® Camera Head (8-pin)  
 20290132, C-CAM® Camera Head (6-pin)  
 20290131, TELECAM One-Chip Camera Head  
 20212030 (PAL)/20212130 (NTSC) and fiber optic light cables

Deflection up/down:	140°/140°
Direction of view:	0°
Angle of view:	120°
Working length:	65 cm
Total length:	93 cm
Working channel	
inner diameter:	2.3 mm
Distal tip outer diameter:	5.2 mm



11302 BDK2 **Intubation Fiberscope 3.7 x 65**, eyepiece version, with suction valve, for use with LED Battery Light Sources  
 11301 D1/D3/DE/DF, C-CAM® Camera Head (8-pin)  
 20290132, C-CAM® Camera Head (6-pin)  
 20290131, TELECAM (PAL) 20212030, TELECAM (NTSC) 20212130 and fiber optic light cables

Deflection up/down:	140°/140°
Direction of view:	0°
Angle of view:	120°
Working length:	65 cm
Total length:	93 cm
Working channel	
inner diameter:	1.5 mm
Distal tip outer diameter:	3.7 mm



11301 AAK1 **Intubation Fiberscope 2.8 x 65**, eyepiece version, with suction valve, for use with LED Battery Light Sources  
 11301 D1/D3/DE/DF, C-CAM® Camera Head (8-pin)  
 20290132, C-CAM® Camera Head (6-pin)  
 20290131, TELECAM (PAL) 20212030, TELECAM (NTSC) 20212130 and fiber optic light cables

Deflection up/down:	140°/140°
Direction of view:	0°
Angle of view:	90°
Working length:	65 cm
Total length:	98 cm
Working channel	
inner diameter:	1.2 mm
Distal tip outer diameter:	2.8 mm



8403 YD **Protective Bag, blue**, for C-MAC® system, made of water-resistant and sturdy material, washable, separate compartments for the monitor and three C-MAC® video laryngoscope blades with electronic module, for use with C-MAC® Monitor 8401 ZX/8402 ZX/8403 ZX, Electronic Module 8401 X/8402 X, power supply, 3x C-MAC® video laryngoscopes



8403 YE **Bag for Intubation Set -C22-**, ULM model, made of water-resistant and sturdy material, washable, separate compartments for C-MAC® video laryngoscopes with C-MAC® POCKET MONITOR and for conventional laryngoscopes, for use with C-MAC® POCKET MONITOR 8401 XDK/8403 XDK, C-MAC® Video Laryngoscopes 8401 xxx/8403 xxx and conventional laryngoscopes



11301 D1 **Battery Light Source LED for Endoscopes**, with fine screw thread, boost mode for temporary increase in brightness, burning time > 120 min, weight approx. 78 g, for use with KARL STORZ endoscopes

11301 D3 **Battery Light Source LED for Endoscopes**, with coarse thread, boost mode for temporary increase in brightness, burning time > 120 min, weight approx. 78 g, for use with KARL STORZ endoscopes

11301 DE **Battery Light Source LED for Endoscopes**, rechargeable, with click connection, boost mode for temporary increase in brightness, color temperature 5500 K, lithium-ion batteries, charging time 60 min, burning time at 100% brightness 40 min, weight approx. 150 g, suitable for wipe disinfection

11301 DF **Same**, with fast screw thread



11301 DG **Charging Unit**, for two LED battery light sources, with fixed integrated power supply and adaptor for EU, UK, USA and Australia, power supply 110-240 VAC, 50/60 Hz, suitable for wipe disinfection, for use with Battery Light Sources LED 11301 DE and 11301 DF



UG 120 **Equipment Cart**, narrow, tall, rides on 4 antistatic dual wheels equipped with locking brakes, mains switch on cover, central beam with integrated electrical subdistributors with 12 sockets, grounding plugs, Dimensions in mm (w x h x d):  
 Equipment Cart: 660 x 1474 x 730,  
 Shelf: 450 x 25 x 510, caster diameter: 150 mm, including:  
**Base Module**, equipment cart, narrow  
**Cover**, equipment cart, narrow  
**Beam Package**, equipment cart, large  
 3x **Shelf**, narrow  
**Drawer Unit with Lock**, narrow  
 2x **Equipment Rail**, long  
**Camera Holder**  
 5x **Mains Cords**, length 100 cm

UG 110 **Equipment Cart**, narrow, small, rides on 4 antistatic dual wheels equipped with locking brakes, mains switch on cover, energy beam with integrated electrical subdistributors with 6 sockets, grounding plugs, Dimensions in mm (w x h x d):  
 Equipment Cart: 660 x 1265 x 730,  
 Shelf: 450 x 25 x 510, caster diameter: 150 mm, including:  
**Base Module**, equipment cart, narrow  
**Cover**, equipment cart, narrow  
**Beam Package**, equipment cart, small  
 2x **Shelf**, narrow  
**Drawer Unit with Lock**, narrow  
 2x **Equipment Rail**, long  
 5x **Mains Cords**, length 100 cm

8401 YB **Clamp**, VESA 75 standard, for fixation of C-MAC® monitor to round profile with diameter 20-43 mm and square profile with diameter 16-27 mm, for use with Monitors 8401 ZX/8402 ZX/8403 ZX

8401 YAB **Crossbar**, for Stand 8401 YA, 70 cm x diameter 25 mm, for positioning C-MAC® Monitors 8401 ZX, 8402 ZX and 8403 ZX, for use with VESA 75 Quick Clip 8401 YCA and Clamp 8401 YB

UG 630 **Bracket**, for mounting standard bars (diameter 25 mm) to equipment rails, package of 2

UG 623 **Multifunctional Holder**, 2-part, for mounting poles, diameter 25 mm, package of 2, for use with Equipment Carts UGxxx





8401 YA\*

**Stand**, for C-MAC® monitor, height 120 cm, rollable with five feet and antistatic castors, crossbar 25 cm x diameter 25 mm for positioning the monitor, with tray, dimensions (w x d x h): 30 x 20 x 10 cm, for use with Crossbar 8401 YAA and Crossbar 8401 YAB

\* The instruments displayed are not included with the stand.



8401 YH

**Holder Set**, for C-MAC®, consisting of two parts: 1 holder for five C-MAC® video laryngoscope blades and 1 holder for one electronic module, made of thermoplastic material, wipe disinfection, to be fixed to a tray



11301 BC

**ProShield Protective Tube**, for flexible telescopes, for single use, unsterile, package of 10, distal closed, for use with Holder for Flexible Endoscopes 29005 IFH

11301 BC

29005 IFH

**Holder for Flexible Endoscopes**, for mounting to standard tubes, incl. installation accessories



20020086

**TROLL-E C-MAC® Mobile Stand**, rides on 4 antistatic dual wheels, 2 equipped with locking brakes, with stainless steel tube,

Dimensions:

Mobile stand: 670 x 1500 x 670 mm (w x h x d),

Caster diameter: 100 mm

Trolley is delivered unassembled

including:

**Subrack**, for mobile stand

**Top Cover**, with guide sleeve

**Stainless Steel Tube**, length 135 cm

**Equipment Rail**

**Cross Tube Adaptor**

**Stainless Steel Round Pipe**, length 25 cm



20020085

**TROLL-E Airway Mobile Stand**, rides on 4 antistatic dual wheels, 2 equipped with locking brakes, for mounting monitors with VESA 75/100 connection, integrated cable conduit in vertical beam, load capacity for monitor:

max. 15 kg

Dimensions:

Mobile stand: 670 x 1660 x 670 mm (w x h x d),

Caster diameter: 100 mm

Trolley is delivered unassembled

including:

**Subrack**, for mobile stand

**Beam Module**, with tube

**Drawer**

**Equipment Rail**

**Cross Tube Adaptor**

**Stainless Steel Round Pipe**, length 25 cm



**STORZ**  
KARL STORZ—ENDOSKOPE

THE DIAMOND STANDARD

KARL STORZ SE & Co. KG  
Dr.-Karl-Storz-Straße 34, 78532 Tuttlingen/Germany  
Postbox 230, 78503 Tuttlingen/Germany  
Phone: +49 (0)7461 708-0  
Fax: +49 (0)7461 708-105  
E-Mail: [info@karlstorz.com](mailto:info@karlstorz.com)

[www.karlstorz.com](http://www.karlstorz.com)

 **Health**  
made in Germany  
[www.health-made-in-germany.com](http://www.health-made-in-germany.com)